



CASTLE HILL

■ A NEAR-PERFECT OPTICAL ILLUSION OF SEAMLESS FLOW – A LIVING, BREATHING TESTAMENT TO THE POTENTIAL OF GREAT PRODUCTS AND ARCHITECTURAL DESIGN

At first glance you could be forgiven for wondering where this beautiful home stops and where the outside begins. Located in Castle Hill, Sydney, the property sits adjacent to a pristine bush corridor. Through a combination of clever design, construction, and choice of windows and doors, the owners are now enjoying a much-coveted balance between the natural environment and the interior of this modern, spacious home.

For its innovative contribution to this project, Midcity Windows was awarded AWA's 2015 Best Use of Windows & Doors: Residential New Construction

Under \$500,000. The awards recognise fenestration products that complement and enhance the design of a dwelling or building. It's not hard to see why the award landed where it did. From the moment you enter the front door of the property, your gaze is drawn through plentiful glazing toward the lush, grey-green of the bush beyond, creating a sense of space, openness and connectedness.

Building Designers, ICR Design, incorporated into the design a series of stunning views, each framed by expansive, large-format, designer windows, which include strategically placed fixed glazing, louvres and awning windows. The result

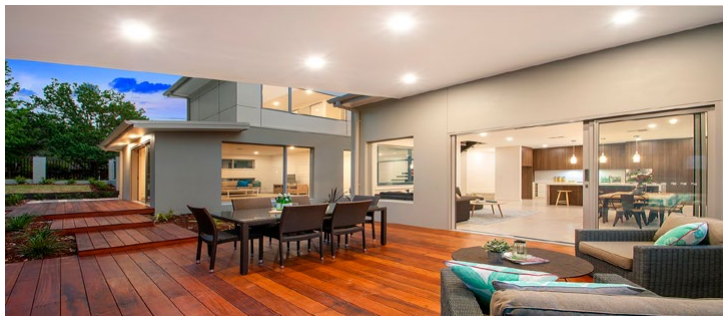
AWS | PROJECT FEATURE

is a light-filled property that maintains a sleek, architectural look while boasting exceptional cross-ventilation, reducing the need for air-conditioning. All products also use Low E glass, contributing to the property's overall sustainability and energy efficiency.

Another feature of the home is the stairway which leads to the first floor from the entry foyer. Visitors are immediately greeted by the sight of a magnificent two-storey glazed curtain wall and glazed balustrade, further enhancing the open feel of the home and its interconnectedness with the natural abundance of its location.

Floor-to-ceiling sliding, stacking doors also maximise space and remove all visual barriers between the home's interior and exterior, while flush flooring links the internal timber floor with the external timber deck.

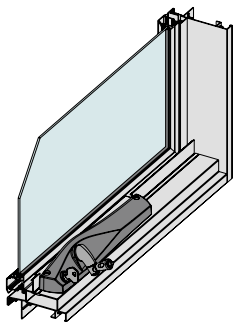
This stunning home at Castle Hill can now be described as a near-perfect optical illusion of seamless flow – a living, breathing testament to the potential of great products and architectural design, and the vision of its owners.



Building Designer & Photography courtesy of: ICR Design | Builder: Brownies Constructions



For more information & the full gallery, visit:
vantagealuminium.com.au



VANTAGE RESIDENTIAL AWNING/CASEMENT SERIES 517

- × Series 517 can be manufactured as a fixed frame window.
- × The Series 517 awning window has been successfully tested for compliance with AS 2047.
- × The 102mm wide frame allows the fabrication of chain winder awning windows with the winder contained within the frame line.
- × Very high water resistance (450Pa) allows this awning window to be used in most situations.
- × This framing system has been designed to align with and snap to the Vantage Series 541 and 542 sliding doors head or jamb and the Series 548 French doors.
- × Awning window type sashes are fitted with heavy duty corrosion resistant chain winders with 304 stainless steel chains as standard.
- × The fixed light beading matches opening sashes on this awning window.
- × The 102mm fixed light framing system can be used when tall fixed lights are required in a high wind load area.



MidCity Windows are completely focused towards making the supply of windows and doors easy. MidCity will provide you with technical advice, design expertise and quality workmanship to ensure the highest quality products for your project. MidCity Windows focus on achieving outstanding solutions for your project without compromise.

2D & 3D CAD Files Available | Download from specifyaws.com.au to use in your projects.

For more information on this and the rest of the Vantage® Aluminium Systems range: vantagealuminium.com.au

